

SAMINE Exploration Update

Atlantic Tin Ltd (“Atlantic Tin” or the “Company”) is pleased to announce that geological mapping and sampling along the newly acquired license at SAMINE has identified a number of out-cropping structures containing tin mineralisation.

Highlights:

- Five large outcropping structures identified in the SAMINE Corridor totalling 1,100m in length and approximately 20m in width
- Mineralised corridor between existing Achmmach resource and Bou El Jaj mneralisation now extends for 10km
- Exploration work to date consists of detailed geological mapping and 1,200 soil samples with assays pending
- Preliminary XRF readings indicate the outcrops contain tin mineralisation

Ongoing geological mapping completed in the SAMINE corridor has defined five, northeast striking zones of outcropping tin mineralisation totalling 1,100m in length and averaging 20m in width (Figures 1, 2 and 3).

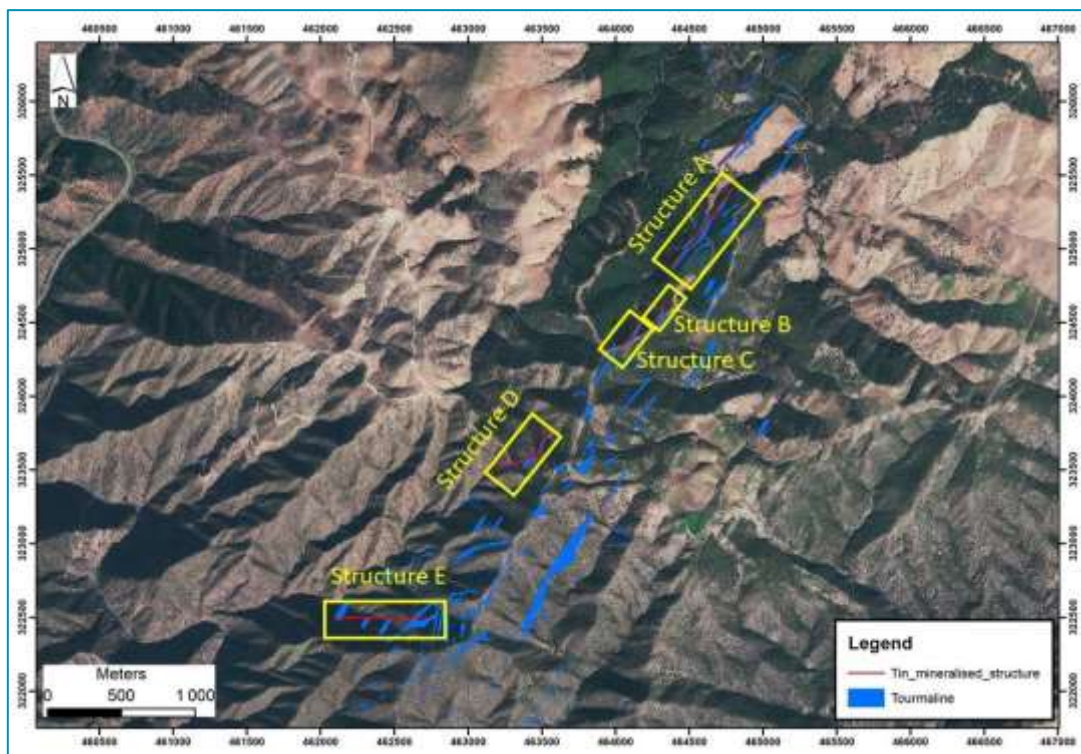


Figure 1 - Map showing tourmaline alteration in blue and tin mineralisation in red

Contact Us

T: +61 8 6188 8181
E: info@atlantictin.com.au
www.atlantictin.com.au

Atlantic Tin Ltd

ABN: 78 116 931 705
Level 2, 22 Mount Street
Perth Western Australia 6000



Figure 2 - Outcropping tin mineralisation at SAMINE



Figure 3 - Outcropping tin mineralisation at SAMINE with Achmmach in the background

Exploration work completed to date consists of detailed geological mapping and 1,200 soil samples taken on an 80m x 80m grid along the full prospective strike length of the SAMINE corridor which is located between Achmmach and Bou El Jaj. This extends the strike length of the mineralised corridor to approximately 10km (Figure 4).

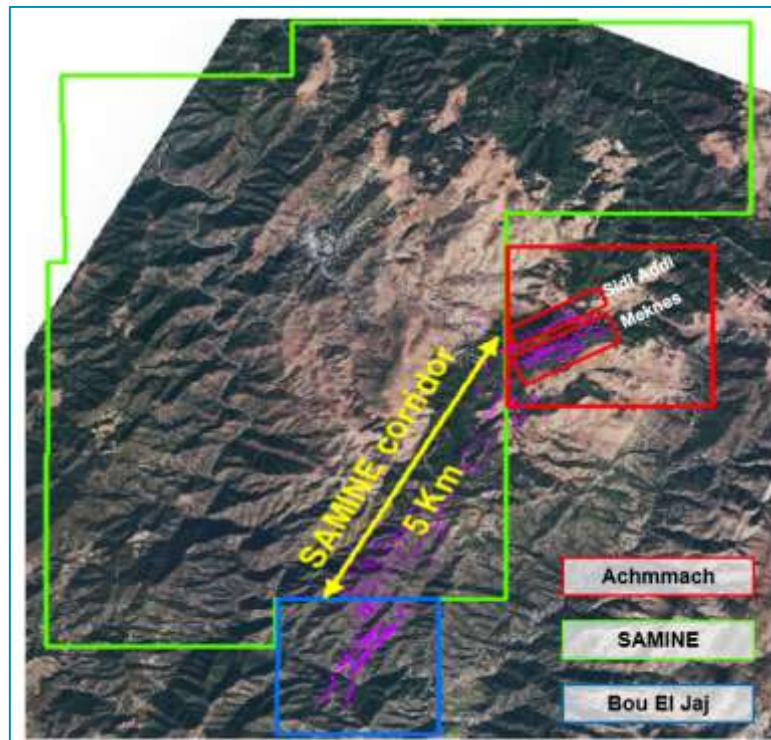


Figure 4 - Map of Achmmach – SAMINE – Bou El Jaj mineralised corridor

The mineralisation at SAMINE is very similar to Achmmach being hosted predominantly within tourmaline altered sandstones and mudstones. Visible cassiterite (tin oxide) was noted in many outcrops with crystals up to 1mm in size being evident.

Unlike Achmmach, where the resource is located approximately 80 metres below the surface, the mineralisation at SAMINE occurs in outcropping structures, which have the potential to be exploited using open pit mining methods.

Licence LE 343180 was acquired in August 2024 along with the SAMINE processing plant, which now forms an integral part of the Achmmach Tin Project. The current feasibility study examines using the upgraded SAMINE processing plant to treat the ore from Achmmach which is located approximately 7km from the SAMINE processing facility.

Next Steps

While waiting on the analysis of the completed soil sampling programme, a detailed rock chip sampling programme is underway to test all known tourmaline outcrops. A diamond saw will be used to cut channel samples across each of the five identified mineralised structures at regular intervals. When the results of the soil sampling, rock chip sampling and channel sampling programs are available, an initial drilling programme will take place to test the highest priority targets.

This announcement is provided for and on behalf of the Board of Directors.

For further information, contact Simon Milroy, CEO at info@atlantictin.com.au

About Atlantic Tin Limited

Atlantic Tin is a tin-focused mineral exploration and development company. Through its Achmmach Tin Project, Atlantic Tin controls one of the highest grade and largest new sources of tin supply globally, and one of the few sources of large-scale mechanised tin production in a low-risk jurisdiction.

The Company (75%) and its Joint Venture partners, Toyota Tsusho Corp (20%) and Nittetsu Mining Co (5%), are advancing the Achmmach Tin Project towards production in the Kingdom of Morocco.

As part of our commitment to sustainable and responsible business practices, Atlantic Tin has embedded the Ten Principles of the United Nations Global Compact into strategies and operations, and committed to respecting human and labour rights, safeguarding the environment, and working against corruption in all its forms.